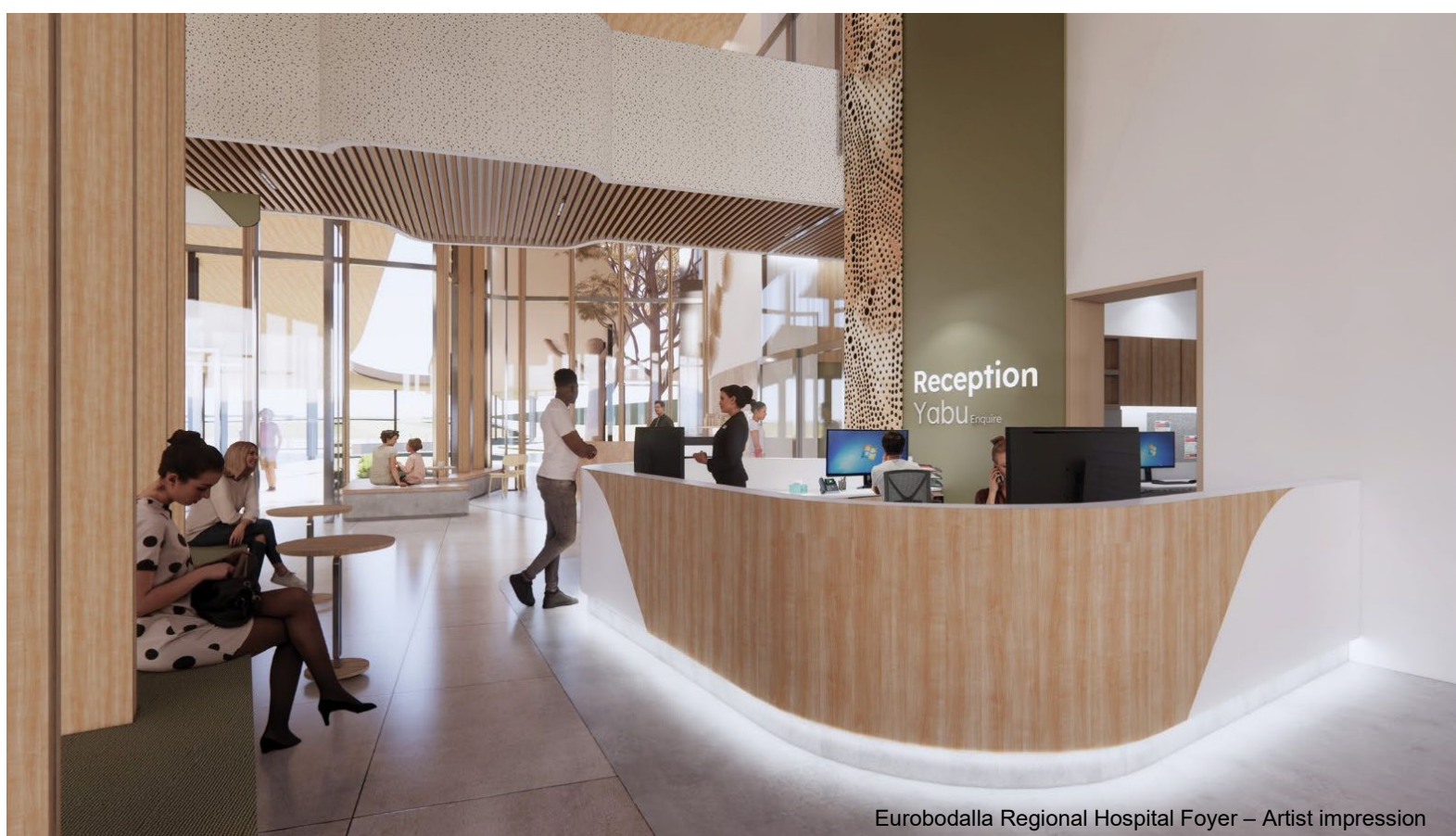


COMMUNITY UPDATE: MARCH 2024

Eurobodalla Regional Hospital and Batemans Bay Community Health project update



Eurobodalla Regional Hospital Foyer – Artist impression

The new Batemans Bay Community Health facility and Eurobodalla Regional Hospital are on track to deliver a stronger, expanded healthcare system for our community.

The new hospital and community health service will work together to ensure our community always has access to the right health care, in the right setting.

Read about the latest news and developments on the two projects in this project update.

Eurobodalla Regional Hospital Development Approval update

The State Significant Development (SSD) planning application for the new hospital continues to progress through the NSW Department of Planning, Housing, and Infrastructure approval process.

We have provided our response to submissions along with additional information requested by the Department about the project.

The next stage in the application process involves the Department finalising its assessment of the project and preparing an assessment report.



Upon successful assessment and approval of the SSD application, we will proceed with appointing the main works contractor, marking a significant milestone to kickstart construction of the new hospital.

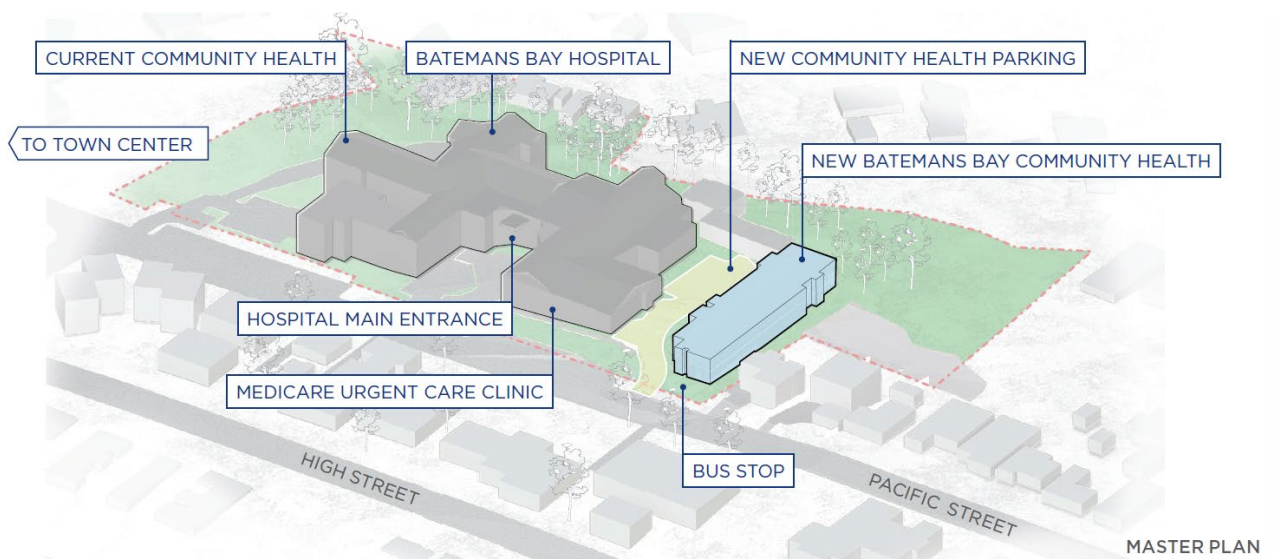
You can read all the documents related to the Eurobodalla Regional Hospital State Significant Development Application on the [NSW Department of Planning and Environment webpage](#).

We will keep staff, stakeholders and the community updated as the planning application progresses.

Batemans Bay Community Health community consultations

Following the release of the Batemans Bay Community Health master plan earlier this year, we invited the community to provide feedback into the planning and design of the new facility.

Consultation on the Batemans Bay Community Health facility was held between Monday 22 January and Monday 19 February 2024.



The consultation included a survey as well as online and in-person workshops providing staff, stakeholders, and the community with a range of opportunities to provide feedback and participate.

The consultation sought feedback on a range of matters relating to the project planning and design such as cultural safety, inclusion, accessibility, look and feel, public and internal areas.

The results are being used to inform the design of the facility and other detailed planning activities.

We're looking forward to sharing what we heard from the community and how it is helping to shape the new Batemans Bay Community Health facility.

Keep an eye out for more news on the [Batemans Bay Community Health project website](#).



FREQUENTLY ASKED QUESTIONS UPDATED

The Frequently Asked Questions (FAQs) for Batemans Bay Community Health and Eurobodalla Regional Hospital have been updated following community, stakeholder and staff sessions held in January and February 2024.

The updates include the latest news and information about the projects including how we are working to strengthen healthcare services for the community.

FAQ updates include:

Q: Will the new hospital be a level 4 regional hospital?

A: The Eurobodalla Regional Hospital will be established as a Level 4 health facility.

New services like paediatrics, intensive care, and an MRI will be included in the new hospital, allowing us to provide a higher level of care for our community.

The new hospital is being designed to address the evolving healthcare requirements of the growing local population, keeping future demand at the forefront. The hospital will elevate healthcare in the Eurobodalla, offering an enhanced level of service beyond the current capabilities of the Moruya and Batemans Bay hospitals.

The development is being supported by a workforce plan, focusing on training, recruitment, and retention strategies to meet the anticipated growth of Eurobodalla Regional Hospital.

The new hospital will require time to transition and develop the workforce to align with the new contemporary models of care, the new facility, technology, and ways of working.



Q: What are the benefits of a level 4 hospital?

A: Expanding healthcare services to higher levels means more people in the community can access specialised care locally, reducing the need for travel.

New services like paediatrics, intensive care, and an MRI that will be provided at the Eurobodalla Regional Hospital strengthen our local healthcare system, allowing us to provide more advanced care for families, the elderly, and everyone in our community.

This will lead to fewer newborns, infants, and children seeking care elsewhere, more mothers giving birth locally, increased capacity for complex procedures on-site, and improved availability of specialist outpatient services in the Eurobodalla.

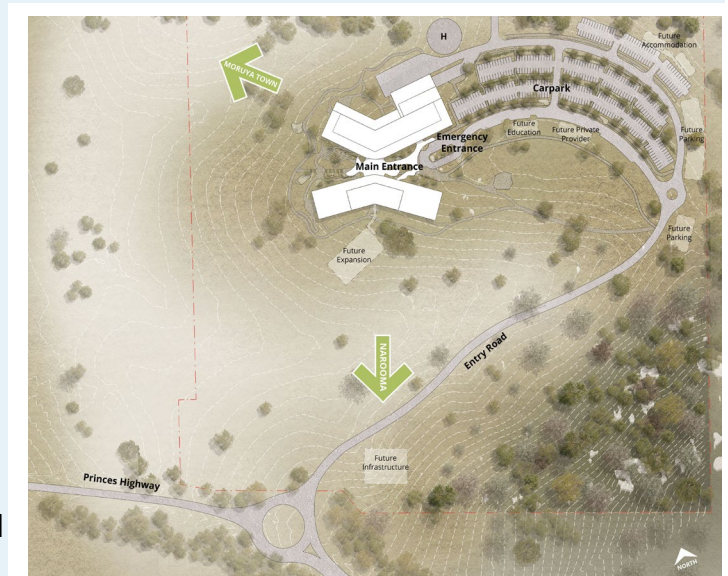
Q: How was the site selected for the new Eurobodalla Regional Hospital?

A: The new hospital site is located in the geographical centre of the Eurobodalla Shire and supports the current and projected population growth of the shire.

The hospital site in Moruya was selected in consultation with community and consumers, Aboriginal representatives, Transport for NSW, Southern NSW LHD, Health Infrastructure, Visiting Medical Officers, and the Eurobodalla Shire Council.

The site meets a range of other important selection criteria including:

- flood and bushfire exclusion zones,
- capacity for future expansion,
- transport links, and
- access to and from key infrastructure such as Moruya Airport and the planned Moruya Bypass.



Q: What transport options will be available for people needing to travel to Eurobodalla Regional Hospital?

A: Southern NSW Local Health District is investigating options with local transport providers to increase support for people to get to and from Eurobodalla Health Services.

SNSWLHD currently partner with a range of organisations such as NSW Ambulance, Patient Transport Services, Eurobodalla Shire Council, and private transport operators to support the community with transport services to health facilities/hospitals.

More information about transport services will be made available as the project progresses.

Q: What is happening to the current Batemans Bay hospital?

A: Batemans Bay Hospital including the Emergency Department will continue to provide healthcare services for the community while the new Eurobodalla Regional Hospital and Batemans Bay Community Health are built.

You can find all the updated FAQs here: www.eurobodallahs.health.nsw.gov.au/frequently-asked-questions

WOULD YOU LIKE TO WIN THIS ELECTRIC CAR?

The Carers Accommodation Eurobodalla Regional Hospital community group are raising funds to support the development of carers accommodation at the new Eurobodalla Regional Hospital.

Raffle tickets to win this *Electric MG Essence* can be purchased at various markets across the Eurobodalla or via Col Jay on 0429 190 299 or via email cpbm@bigpond.com

Tickets are just \$50 each. More than half of all tickets have already been sold. Good luck!



Find out more about our projects

Keep up to date with all the latest project news by visiting our websites.

- Eurobodalla Regional Hospital www.eurobodallahs.health.nsw.gov.au/
- Batemans Bay Community Health <https://www.hinfra.health.nsw.gov.au/bbch>

Also, keep an eye on Southern NSW Local Health District's **Facebook** and **Instagram** social media channels for the latest updates.

Get in touch

If you have any questions or would like more information, please email the project team directly:

Eurobodalla Regional Hospital email: HI-EurobodallaHospital@health.nsw.gov.au

Batemans Bay Community Health email: HI-BatemansBayhealth@health.nsw.gov.au