

COMMUNITY UPDATE: AUGUST 2023

Eurobodalla Regional Hospital and Batemans Bay Community Health project update



The NSW Government has committed \$20 million for a community health service in Batemans Bay and \$260 million to build a sustainable, modern and purpose-built hospital in Moruya to support the needs of the Eurobodalla community.

The Eurobodalla Regional Hospital will work together with Batemans Bay Community Health to ensure you always have access to the right health care, in the right setting.

In this project update you will read about the latest news and developments on the two projects.

What's the latest news on the Eurobodalla Regional Hospital?

Since the hospital project was announced in 2020 significant progress has been made.

Following input from the community, staff, and consumers, the project team has finalised site selection, concept and schematic designs and commenced detailed work to support the planning application.

In April this year, Multiplex was appointed as the early works contractor and is working with the project team, staff and clinicians to finalise the detailed design.

We thank you for your patience while this important work continues to deliver a state-of-the-art regional hospital that meets the unique health care needs of the community.

Eurobodalla Regional Hospital planning approval

As part of the planning approval process, Health Infrastructure is required to lodge a State Significant Development Application (SSDA) with the Department of Planning and Environment.

The SSDA seeks approval for the construction and operation of a hospital in south-east Moruya. It also requires the development of an Environmental Impact Statement detailing project activities, potential environmental impacts, and proposed mitigation measures to manage these impacts.

The Department of Planning and Environment will publicly exhibit the Environmental Impact Statement for 28 days, providing an opportunity for all members of the community, including staff, to have their say on the development.

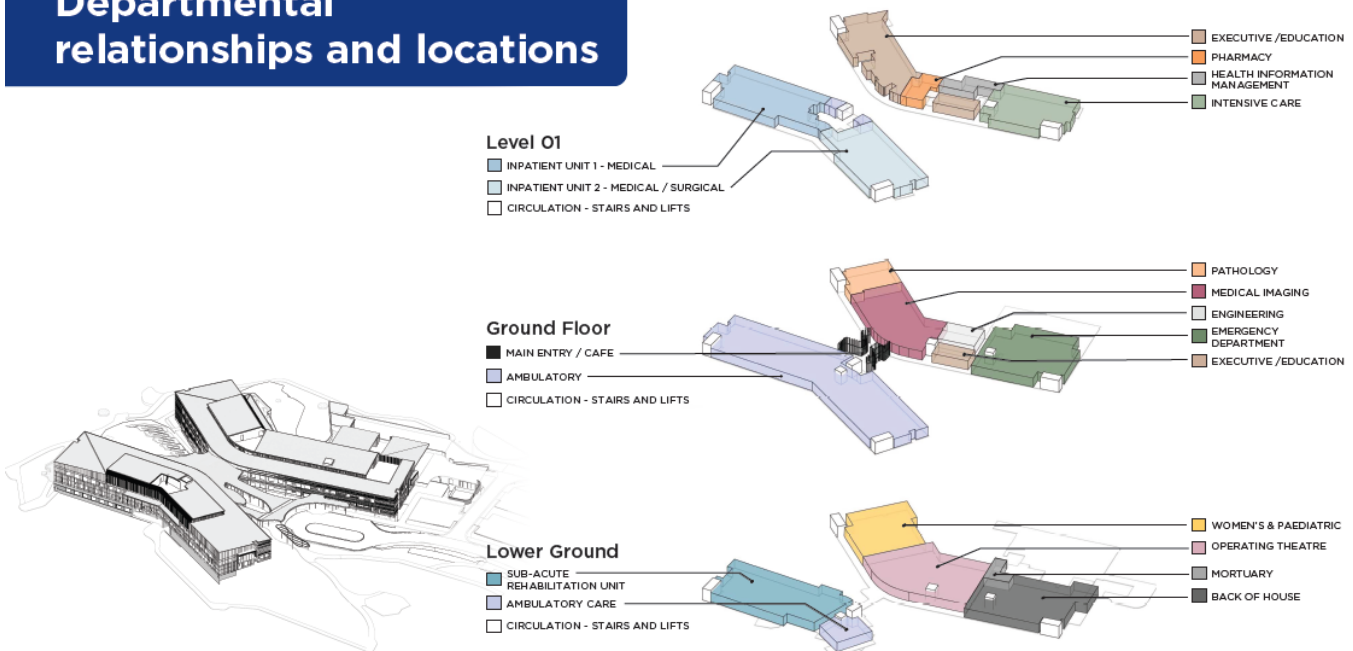
Check out the [planning approval factsheet](#) and the [frequently asked questions](#) on our website to help explain the process.

Staff feedback on internal design

The project team has worked closely with staff, clinical leaders and clinicians from Southern NSW Local Health District to finalise the internal layout of the new hospital.

This includes the emergency department, intensive care unit, paediatrics, maternity, inpatient units, education and a range of outpatient and community health services.

Departmental relationships and locations



Connecting with Country

The Eurobodalla Regional Hospital is a pilot project for the **NSW Government Architect's Connecting with Country Framework**.

The framework aims to value and respect Aboriginal cultural knowledge through co-designed development projects, protecting and preserving Aboriginal heritage and culture, and creating opportunities for traditional practices to be integrated into the operation of the new hospital.

The project will continue to engage with the Aboriginal community through the final design and construction phases of the project.

Visit our website for more information on Connecting with Country.

Archaeological work uncovers artefacts

The important first step in construction started in April this year with an archaeological investigation process on the site of the new hospital to identify Aboriginal objects and artefacts.

The archaeologists worked alongside Registered Aboriginal Parties and traditional owners to unearth and document almost 2,400 artefacts. The artefacts are evidence that Aboriginal people lived and worked on this land thousands of years ago.



Arts in Health

The Arts in Health Program integrates arts into NSW Health capital works to create engaging public health spaces for patients, staff, and visitors.

Exposure to the arts has a profoundly beneficial impact, improving patient health and wellbeing, supporting cultural connections to the new hospital, and creating a welcoming environment for everyone.

The Arts in Health Program is being delivered as part of the Eurobodalla Regional Hospital development, in partnership with Southern NSW Local Health District, artists, and communities.

Art in the new hospital

The Arts in Health Program for the new Eurobodalla Regional Hospital is about much more than deciding what will hang on the walls. It aims to leave a positive lasting cultural legacy for the community and create a significant opportunity to celebrate the creative talents of the region.

The program is led by the Eurobodalla Regional Hospital Arts Project Working Group which includes the local community and staff representatives.

The project team is working closely with the Aboriginal community, artists, patients, staff, architects, designers, and the community to ensure artworks reflect the unique qualities and stories of the Eurobodalla region, its people, and values.

Multiplex appointed to Eurobodalla Regional Hospital

In April, following a competitive tender process, construction company Multiplex was appointed to finalise the design and planning for the new hospital.

Multiplex has worked on several Health Infrastructure projects including the South East Regional Hospital in Bega and the new Maitland Hospital in the Hunter Valley.

Batemans Bay Community Health

Located in Batemans Bay, the health service will work together with the new Eurobodalla Regional Hospital, to ensure the community will have access to the right health care in the right setting.

Batemans Bay Community Health will provide a range of benefits such as:

- Allied Health
- Child, Youth and Family Services
- Women's Health/Sexual Health
- Primary health care services such as community nursing, wound management and palliative care
- Aboriginal Health
- Community Mental Health and Drug & Alcohol
- Urgent care services with extended operating hours to support people with non-life-threatening illness and minor injuries.

Further consultations with key stakeholders including clinicians, staff, patients, carers and the local community to inform planning and design are expected to commence in late 2023.

For more information, please contact the project team on 1300 391 949, [sign up for updates](#) or send us an email: HI-BatemansBayhealth@health.nsw.gov.au.

Find out more

Register to be updated as these projects progress and find out how you can participate in upcoming community consultation sessions.

If you have any questions or would like more information about the Eurobodalla Regional Hospital or Batemans Bay Community Health, you can email the project teams directly.

Eurobodalla Regional Hospital email: HI-EurobodallaHospital@health.nsw.gov.au

Batemans Bay Community Health email: HI-BatemansBayhealth@health.nsw.gov.au.

KEEP IN TOUCH: email: HI-EurobodallaHospital@health.nsw.gov.au phone: 1300 391 949
web: eurobodallahs.health.nsw.gov.au