

**The NSW Government has announced \$260 million to build a sustainable, modern and purpose-built facility to support the needs of the entire Eurobodalla Shire from Narooma to Batemans Bay.**

With input from the community, the New Eurobodalla Regional Hospital is being planned, designed, and delivered to meet the unique health care needs of the Eurobodalla community.

Health care practitioners, staff, consumers, and the Eurobodalla community, including our local Aboriginal community, have been involved in the design and planning for the new hospital and consultation is ongoing.

The new hospital will be located on a new site to the south-east of the Moruya township and will be larger than both Moruya and Batemans Bay hospitals combined. The facility is designed to accommodate a Level 4 health facility with the capacity to grow as demand for services change.

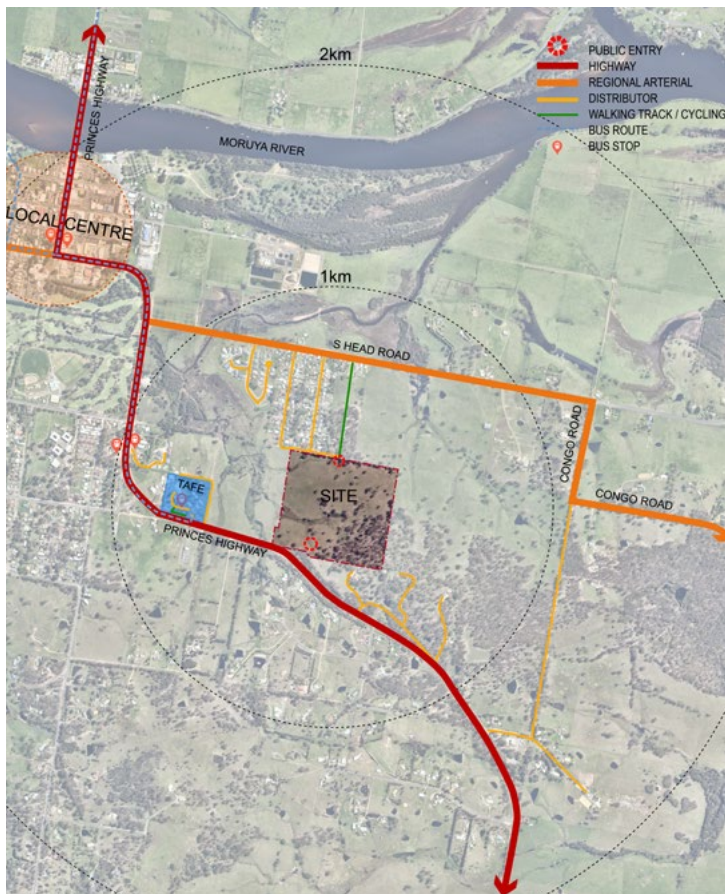
**The New Eurobodalla Regional Hospital will include:**

- An emergency department
- An eight bed Intensive Care Unit / Close Observation Unit (COU)
- Increased capacity for chemotherapy treatments
- Surgical and operating theatres
- Expanded medical imaging, including MRI and X-ray
- Ambulatory care for community outpatient services
- Maternity services
- Paediatric services including inpatient beds
- Mental health beds for short term admissions, and
- Enhanced education and training facilities.

**How can you be involved?**

If you would like to be involved in shaping key aspects of the hospital amenity and facilities contact us via:

**HI-EurobodallaHospital@health.nsw.gov.au**



ARTIST'S IMPRESSION - THE MEETING PLACE

## Where are we now?

Significant progress has been made since the announcement of funding for the new hospital in 2020, the release of the master plan in 2021, and the release of the concept designs in August 2022.

**2020**  
Project announced

**2020**  
Site selection announced

**2021**  
Master Plan complete

**2022**  
Concept Plan complete

**2023**  
Planning application lodged  
and on public exhibition

COMING  
SOON

**2023**  
Construction expected to commence

**2025**  
Construction expected to be complete

## Planning approval process

An Environmental Impact Statement will soon be lodged with the NSW Department of Planning and Environment as part of the State Significant Development Application to build the new hospital.

This document includes detailed studies by independent experts covering a range of topics such as:

- Construction management
- Transport and access
- Public domain, and
- Structural and civil engineering.

## Where can I view the Environmental Impact Statement and provide my feedback?

The Environmental Impact Statement will be available online on NSW Department of Planning and Environment (DPE) in the coming weeks. We'll provide a link to the document from our website as soon as it is published <https://www.eurobodallahs.health.nsw.gov.au/the-project/planning/state-significant-development-application>

Formal submissions about the proposal may be made on the DPE website during the 28-day public exhibition period. Please recheck our website for the link.

You can also review key features of the hospital plans, ask questions and provide informal feedback anytime by visiting our project website at [www.eurobodallahs.health.nsw.gov.au](http://www.eurobodallahs.health.nsw.gov.au) or by emailing [HI-EurobodallaHospital@health.nsw.gov.au](mailto:HI-EurobodallaHospital@health.nsw.gov.au)

## About your New Eurobodalla Regional Hospital

Feedback from doctors, clinicians, staff and the local community is helping to shape key features of the new hospital including:

- A campus precinct with spaces, landscaping, and parkland as well as the hospital buildings providing connection and recreation spaces for the Eurobodalla community
- A helicopter landing pad for transfer of patients requiring specialist care to hospitals in Sydney and Canberra
- 384 car parking spaces available for the community and staff
- Large scale windows to take advantage of natural light and westward views to the mountain ranges of the Deua National Park
- The incorporation of Aboriginal knowledge to build connections with Country, creating a culturally safe space; including the use of the local Aboriginal Dhurga language to support wayfinding around the hospital campus and the inclusion of a Meeting Place
- A comprehensive Biodiversity Management Plan to ensure native flora and fauna are protected and looked after
- The integration of local art across the hospital campus to create engaging and interesting public health spaces that support improved wellbeing
- The incorporation of sustainability principles in the design and construction of the project, and
- The latest technology and equipment to enable the delivery of contemporary models of care to improve health care outcomes for patients.





Muladha Gamara Cultural Dancers perform at the ceremonial land cleansing ceremony on the site of the new hospital

## Connecting with Country

Closer connections with the local Aboriginal community are helping to ensure the new hospital is a place of healing and wellbeing for all. The new hospital is a pilot project for the NSW Government Architect's Connecting with Country Framework.

In addition to the existing community consultation process, Connecting with Country seeks to incorporate traditional practice into the design of the facility including local Aboriginal knowledge in strategies to reduce the impacts of natural events such as fire, drought and flooding through sustainable land and water use practices.

In September 2022, a ceremonial land cleansing was held on the site of the new hospital. The ceremony

included a cultural burn which is an ancient Aboriginal tradition used to regenerate Country and prepare the land as a safe and welcoming place for all who visit.

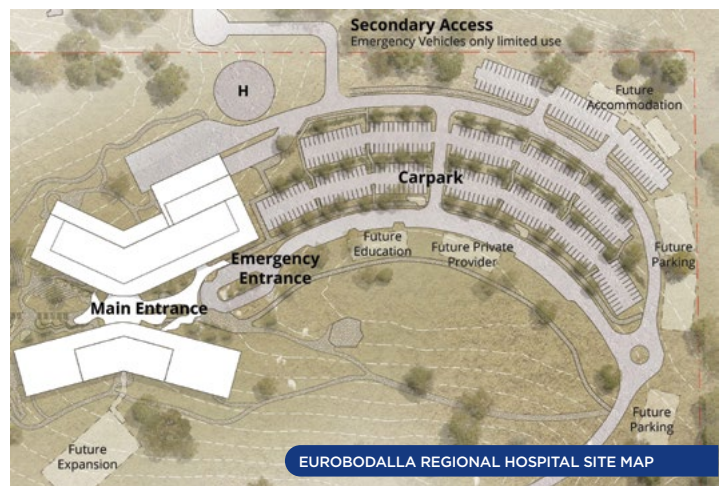
An archaeological process will be undertaken on the site of the new hospital to identify any significant Aboriginal objects or artefacts. The archaeologists work closely with the Aboriginal community as well as the Cobowra Local Aboriginal Land Council and other Registered Aboriginal Parties to undertake this work.

The new hospital will incorporate the use of local language, as well as cultural health, wellbeing, and healing practices, focused on creating a culturally welcoming and safe facility for all.

## Local flora and fauna

We are committed to protecting and cultivating local flora and fauna on the new hospital site. Experts have undertaken day and night surveys of animals, trees, plants and vegetation located on or close to the perimeter of the site. This survey identified native plants and vegetation as well as wildlife and important native animal habitats.

The information gathered forms part of the Biodiversity Management Plan (BMP) for the project. The BMP is one of the guiding documents which informs how the site is managed during construction, and once the hospital opens, to ensure native flora and fauna are protected and encouraged.



## Arts and culture

The Arts in Health Program integrates arts into NSW Health capital works to create engaging public health spaces and improve clinical health and wellbeing outcomes for patients, staff, and visitors.

We will collaborate closely with artists, patients, staff and carers, architects, and designers through planning, delivery, and commissioning stages to ensure the experience reflects the unique qualities of the Eurobodalla region, its people, and values.

The project team is also working with Aboriginal groups from the Eurobodalla region to integrate Aboriginal art and culture within the architecture, landscape, art, interiors, and wayfinding in the new hospital as part of the Connecting with Country Framework.

## Sustainability

Health Infrastructure is committed to including sustainability principles in the design and construction of health projects and during the operation of the facility.

Our projects are designed to comply with energy targets in-line with the NSW Government's Resource Efficiency Policy, using design and innovation in new facilities to reduce waste, costs, and Health's carbon footprint. Installation of solar panels, and the infrastructure to support them, are considered during planning for all NSW Health development projects.

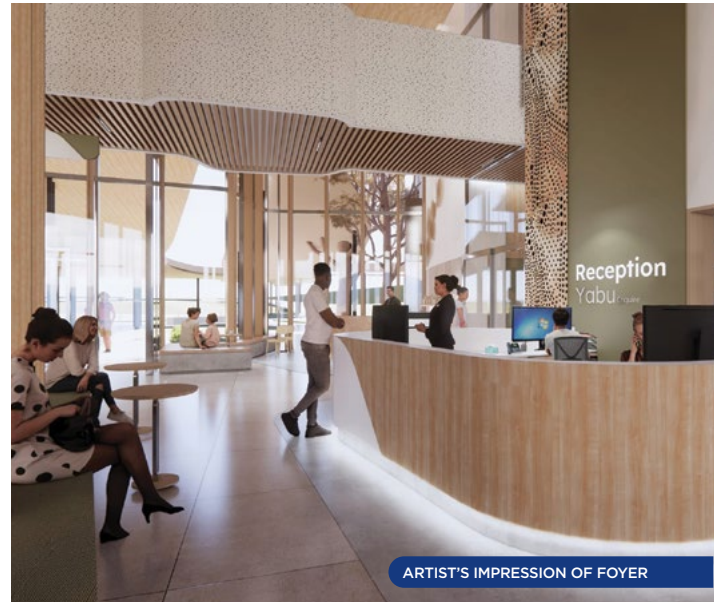
The project team will provide more information about the new hospital's sustainability features as planning progresses.

## Managing construction

Construction of the New Eurobodalla Regional Hospital will commence in 2023. During the hospital construction access will be from the Princes Highway.

We are committed to minimising disruption to the local community and all our neighbours during construction and maintaining the safety of all those who engage with our site is our number one priority.

We recognise that construction work has the potential to affect our neighbours and the local community. We will continue to consult with the community as the project progresses to reduce the impact of construction on our neighbours.



ARTIST'S IMPRESSION OF FOYER

## New ways of working

The New Eurobodalla Regional Hospital will be fitted out with the latest technology and deliver current as well as new models of care to improve health care outcomes for patients. This includes continuing to support outpatient services such as community nursing and home visits as well as telehealth and virtual care.

With plans for enhanced education and training facilities, staff working in the new hospital will have opportunities to learn from specialists and acquire the best possible skills in modern, fit for purpose spaces.

The new hospital will be supported by a workforce plan to train, recruit, and retain staff to meet the future growth of Eurobodalla region.

Planning is underway to transition and develop the workforce over the coming years, to align with the new contemporary models of care, the new facility, technology, and efficient and effective ways of working.



FOR MORE INFORMATION ABOUT THE PROJECT

1300 391 949

HI-EurobodallaHospital@health.nsw.gov.au [www.eurobodallahs.health.nsw.gov.au](http://www.eurobodallahs.health.nsw.gov.au)